

The Homestead at Boulder City

A Senior Living and Care Community



ASSISTED LIVING



THE HOMESTEAD AT BOULDER CITY

Assisted Living

At The Homestead at Boulder City, your living experience is your choice.

Within The Homestead's welcoming community, your needs are anticipated and accommodated. In a convenient, single-level neighborhood of spacious studios, one- or two-bedroom apartment homes, bright and airy floor plans with appealing views offer assisted living with style—yours!

Personal care delivered within your Homestead apartment is designed to fulfill your desires to maintain your highest levels of independence and health, while enjoying an appealing place to call home. You choose when and how to receive health care and personal care services through your individualized plan of care. An array of added conveniences and optional amenities enhances your assisted living experience.

A maintenance-free lifestyle leaves you more time to experience everything The Homestead has to offer, including an active social calendar of celebrations, stimulating programs and spiritual events. Or you simply may choose to stay home and appreciate The Homestead's lovely, open setting of delightful landscaping and shaded patios. No matter how your day unfolds, your stylish apartment home is ideal for any occasion.

Special Features

- Bright, open floor plans
- Kitchen (non-functioning stoves)
- Thoughtfully designed bathroom with step-in shower and grab bars
- Individually controlled heat and air conditioning
- Blinds on all windows
- Pet-friendly

Added Conveniences

(Included in monthly rate)

- Three daily meals served restaurant-style
- Weekly housekeeping and linen change
- Weekly personal laundry (two loads)
- Daily "I'm OK" check-in
- Secured-access entrance with video surveillance
- Personal pendant urgent call system
- Complimentary Wi-Fi
- Scheduled transportation
- Complimentary laundry facilities
- Life enrichment and educational programs
- All utilities (excluding cable and telephone)
- Apartment and building maintenance
- Priority access to other Homestead at Boulder City living and care options based on availability
- Professional management by Volunteers of America
- Month-to-month residency agreement

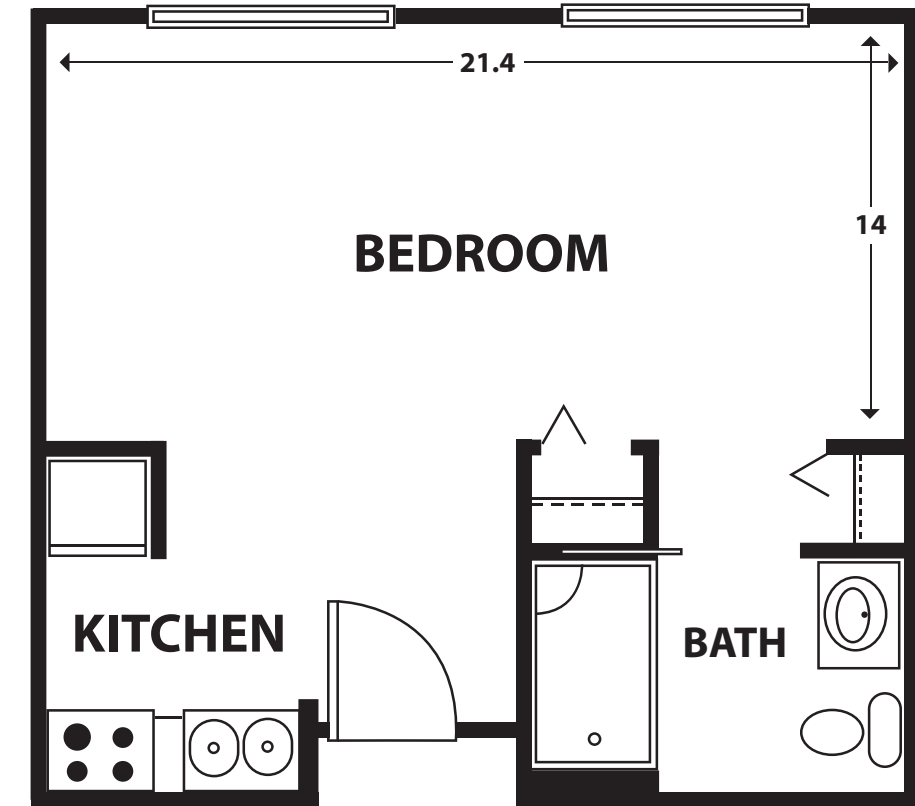
Extra Services

(Available for additional fee)

- Access to personal care 24 hours/day
- Additional laundry and linen services
- Additional housekeeping
- Guest meals
- Guest suite
- Beauty and barber services

APARTMENT

Floor Plans

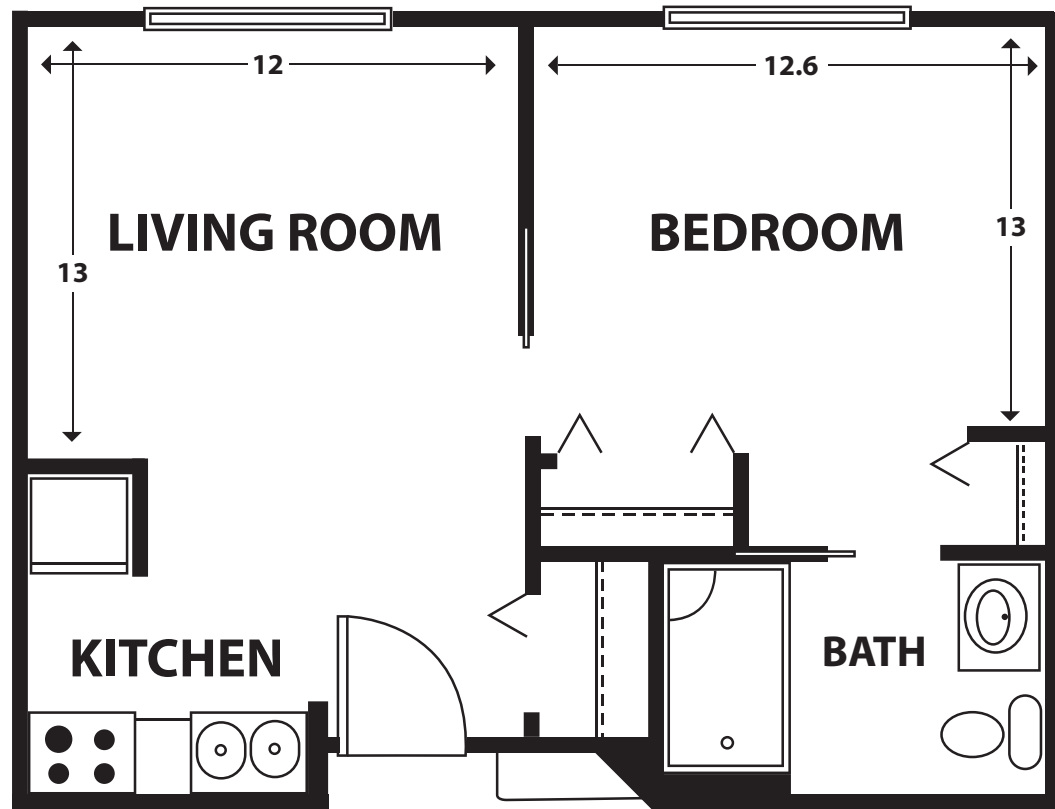


Studio

426 sq. ft.
Monthly rate: \$2,615

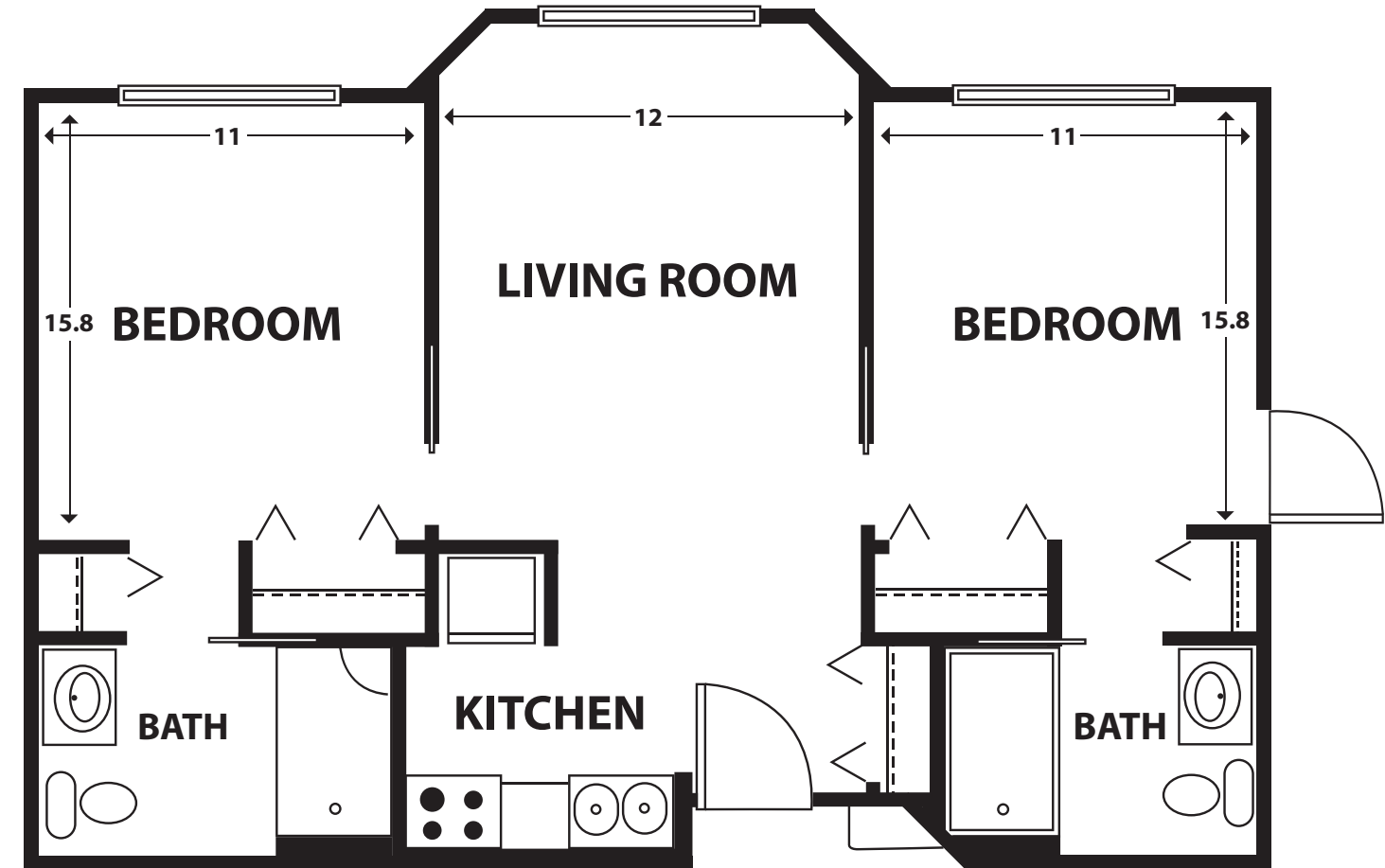
APARTMENT
Floor Plans

APARTMENT
Floor Plans



One Bedroom

494 sq. ft.
Monthly rate: \$3,120



**Two Bedroom
With Private Patio**

737 sq. ft.
Monthly rate: \$4,035

Rental Rates

Apartment Style	Square Footage	Monthly Rate
Studio	426	\$2,615
One bedroom	494	\$3,120
One bedroom deluxe	519	\$3,250
Two bedroom w/patio	737	\$4,035
Second occupant fee		\$710

Features and amenities are subject to change. All square footage and dimensions are approximate.

ASSISTED LIVING Personal Care Packages

Your personalized plan of care begins with a complimentary health assessment provided by a licensed nurse. Together you'll select assisted living services that suit your needs and personal preferences. An on-site licensed nurse manages your individualized plan of care, and assures your in-home assisted living needs are accommodated when and how you'd like.

Nurse management is included in each personal care level, and you may add a la carte service options.

Nurse Management

- \$255/month

***Required if no level of care is selected**

- Nurse on site weekdays and for on-call support
- Nurse liaison with your health care professionals
- Nurse coordination of clinic appointments and hospital transfers
- Nurse maintenance of resident health information
- Nurse coordination of laboratory requests

Level I

- \$775/month

- Nurse management
- Medication set-up – up to five (5) medications, including medication ordering and communication with physician, pharmacy and family. Excludes diabetic and anticoagulant management
- Medication administration – up to two (2) times per day
- Shower supervision- two (2) times per week or meal escorts

Level II

- \$1,080/month

- Nurse management
- Medication set-up – six (6) or more medications, including medication ordering and communication with physician, pharmacy and family. Excludes diabetic and anticoagulant management
- Medication administration – up to four (4) times per day
- Shower supervision – two (2) times per week
- Assistance with dressing and grooming in the a.m. and p.m. – up to 30 minutes per day

Level III

- \$1,385/month

- Nurse management
- Medication set-up – six (6) or more medications, including medication ordering and communication with physician, pharmacy and family. Excludes diabetic and anticoagulant management
- Medication administration – more than four (4) times per day
- Shower assistance two (2) times per week
- Extensive assistance with dressing and grooming in the a.m. and p.m. – up to 60 minutes per day
- Assistance with one-person transfers
- Daily assistance with incontinence management. Incontinence product paid for by resident

Level IV

- \$1,690/month

- Nurse management
- Medication set-up – six (6) or more medications, including medication ordering and communication with physician, pharmacy and family. Excludes diabetic and anticoagulant management
- Medication administration – more than four (4) times per day
- Shower assistance two (2) or more times per week
- Extensive assistance with dressing and grooming in the a.m. and p.m. – up to 60 minutes per day
- Assistance with one or two-person transfers
- Daily assistance with incontinence management or scheduled assistance using the bathroom. Incontinence product paid for by resident
- Escorts to all meals and activities

ASSISTED LIVING Personal Care Packages

A La Carte Services

- Shower/bath assistance – \$27 per shower or bath
- Nursing Assistant – \$12.50 up to each 15-minute increment
- Nurse – \$29.50 up to each 15-minute increment
- Meal Reminders – \$175/month reminders for all meals
- Escort Package – \$275/month escorts to all meals
- Escort Package – \$270/month escorts to all daily activities
- Escort Package – \$385/month escorts to all meals and daily activities
- Escort to personal or medical appointments – \$40 per hour
- Transportation to appointments- \$62 (outside of Boulder City)
- Pet Deposit- \$550/one-time fee, nonrefundable
Pet clean-up- \$15/per occurrence
Pet clean-up- \$55/week



For more information about
The Homestead at Boulder City
or to schedule a tour, please
call 702.294.8720 or visit
homesteadbouldercity.org.

The Homestead at Boulder City— A Senior Living and Care Community

The Homestead is a community filled with possibilities. Here you'll experience cozy neighborhood ease and sensibility, combined with the convenience and inspiration of scenic parks, nearby Lake Mead, shopping, golf, entertainment and more.

At The Homestead, you can take comfort in knowing your needs can be met today and tomorrow, through an array of thoughtfully planned living options and amenities.

Living and Care Choices

- Spacious, well-appointed independent living apartments
- Thoughtfully designed assisted living apartments
- Intimate memory support households

Community Attractions


- Complimentary Wi-Fi
- Restaurant-style dining
- Beauty and barber services
- Guest suite
- Private dining
- Dining atrium
- Library and living rooms
- Fireplace parlor
- Covered patios
- Walking paths
- Outdoor courtyards and green spaces

*The Homestead at Boulder City is a smoke-free building.
Pets are welcome. Guidelines apply.*



The Homestead at Boulder City A Senior Living and Care Community

1401 Medical Park Drive
Boulder City, NV 89005
702.294.8720
homesteadbouldercity.org

 Follow us on Facebook

The Homestead at Boulder City is a Volunteers of America community. Founded in 1896, Volunteers of America is a national, faith-based, nonprofit organization dedicated to serving almost 2 million people each year.

